

# Laser Hair removal

1800W Laser

## Unique Advantages

1. Collimated spot
2. Handle lightweight design
3. High Peak Power, Short Pulse Width



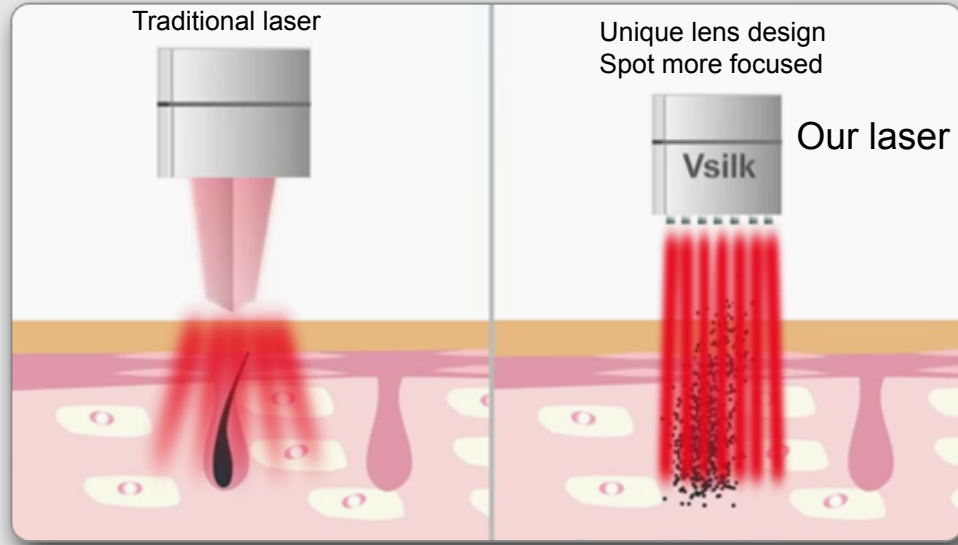
Advantage of laser: High peak power with long lifetime


CE and ISO13485 from  
FDA Approved


RAIOS

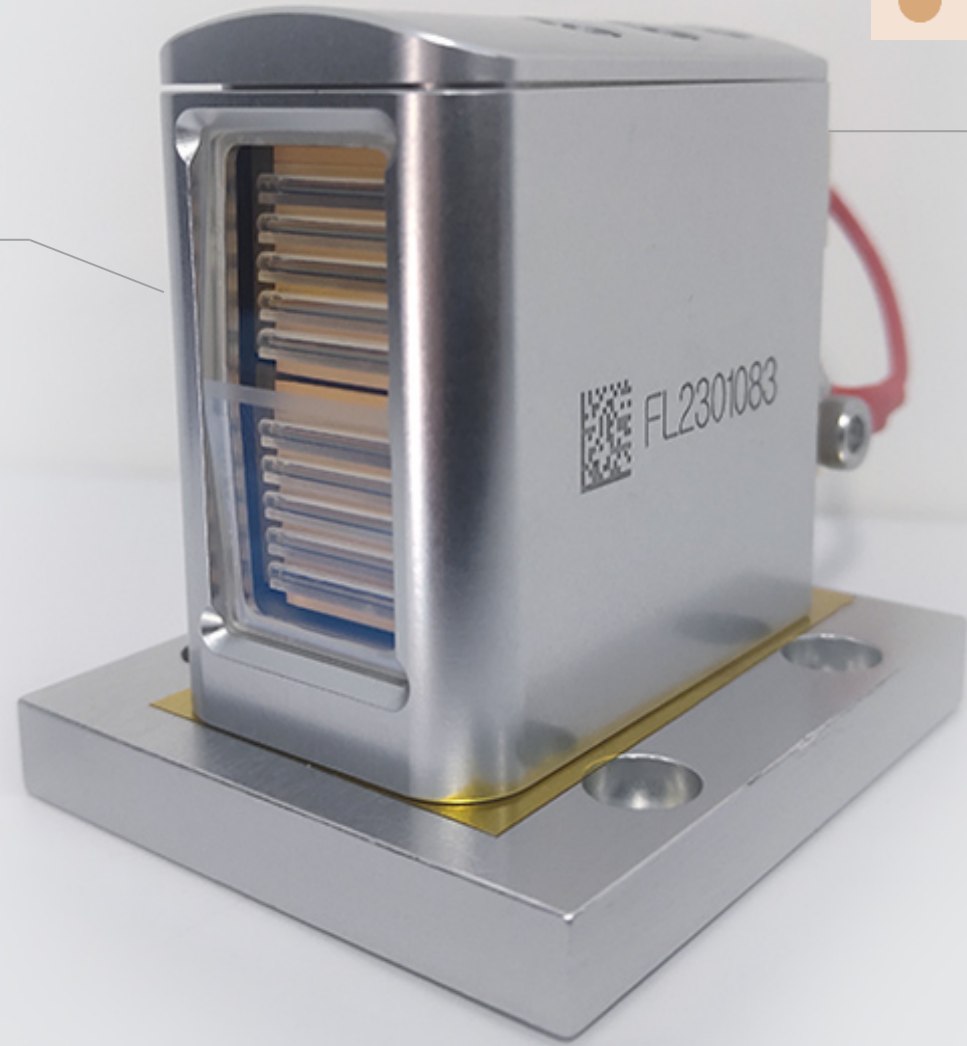
 **COHERENT**® American Coherent laser chip

 1800W



 Energy 200% ↑  
higher

 Miniaturization ~50% ↓ and  
lightweight ~30% ↓



# For different skin type

755+808+1064nm for all skin types

With AresLite large spot size, and integration of three wavelengths, it facilitates increased treatment coverage to significantly reduce treatment time and make the process easier and safer for patients.

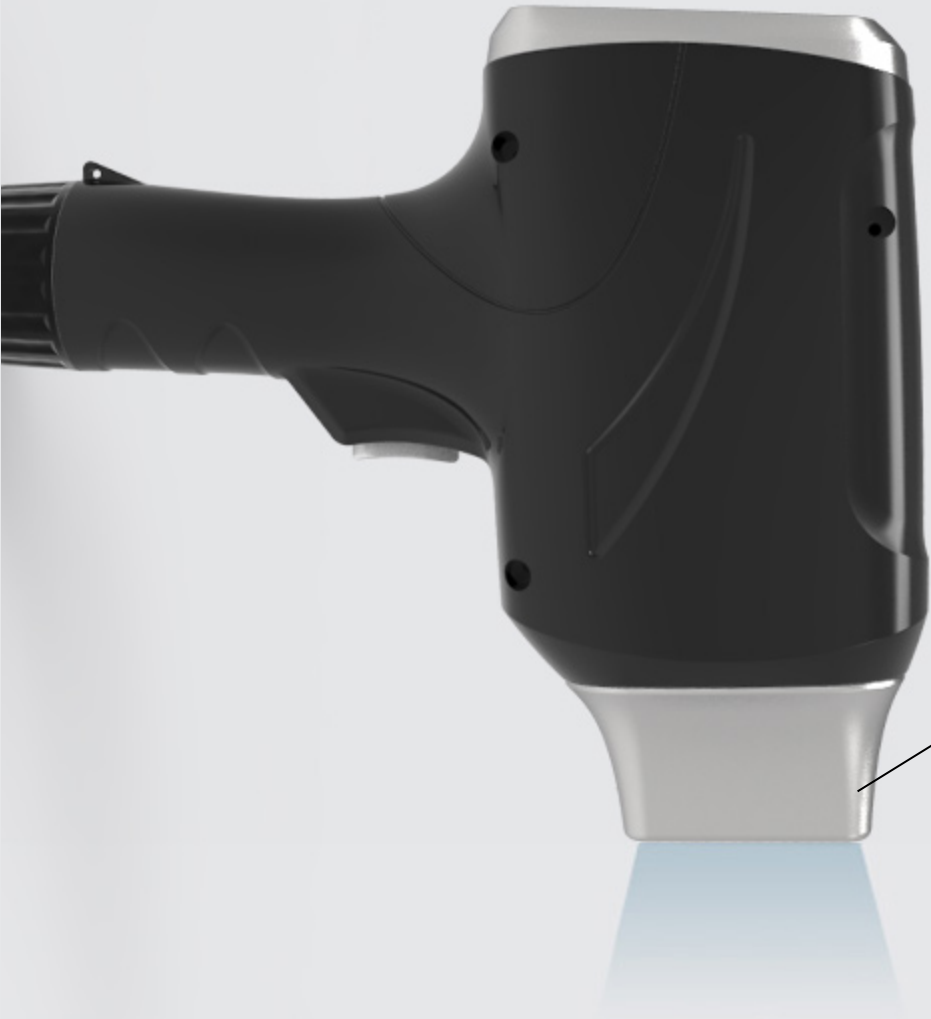


- ✓ 755mm
- ✓ 808mm
- ✓ 1064mm



multy pulse , pain free ,better clinical result

- ✓ The handle is lighter, making it easier for the therapist;
- ✓ The energy reaches the treatment area directly without energy loss;
- ✓ Without crystal, the energy is more focused and the treatment effect is better.



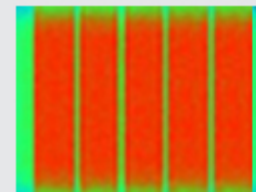
### High beam quality is more effective! safer!

Leading the industry into the era of "high energy density and longer life"

**1800W** Spot size **14.4\*32MM**

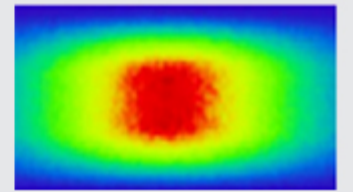
Micro-optical component  
integration  
Special optical  
design  
High spot uniformity

Optical shaping  
Beam focusing



energy density 10J/cm<sup>2</sup>  
@20ms

No optical shaping  
The beam diverges rapidly



energy density 2J/cm<sup>2</sup>  
@20ms

energy compare  
with distance  
32mm

Spot uniformity



American Coherent laser  
chip



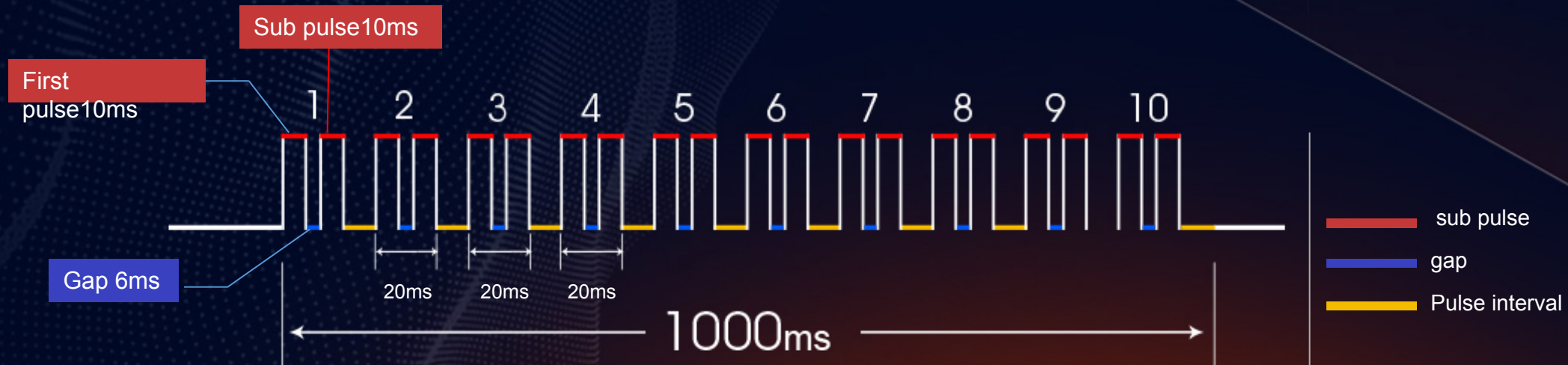
## Multipulse

Greatly increase laser life

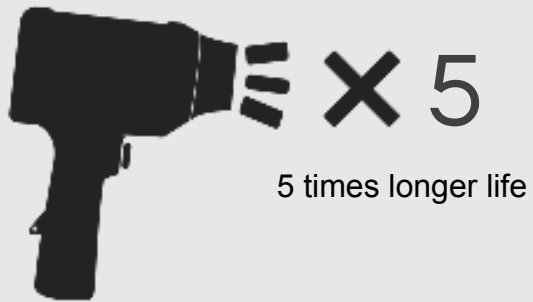
Divide a pulse into several sub pulses. The lgap of each sub pulse is 6ms, which can not only ensure that the output energy meets the requirements of hair removal, but also protect the heat dissipation of the laser, greatly increasing the life of the laser.

### Condition :

power : 10J/CM<sup>2</sup>  
pulse width : 20ms  
frequency : 2Hz



## High quality filter ,prolong life



- ✓ Can work continuously for 24 hours
- ✓ One instrument can do 2000 people/time
- ✓ High power, strong cooling

Multipulse



14.4×32mm

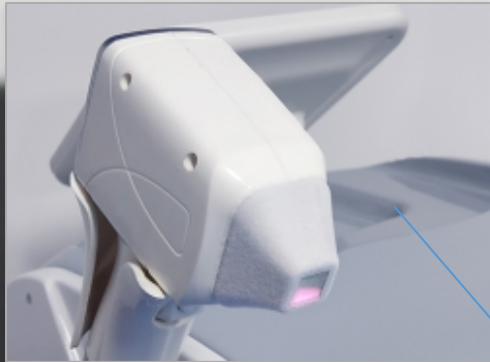


- Handle intelligent adjustment
- ✓ Refrigeration adjustable
  - ✓ Pause/start control
  - ✓ Energy display
  - ✓ Temperature display
  - ✓ Counting display

- **High power compressor**

suitable for high-frequency and high-power lasers

DC micro chiller takes micro compressor and micro heat exchanger as the refrigeration core, embedded in the equipment in the form of modules, small in size and strong in refrigeration. Frequency conversion technology control, energy saving



head freezing

- ✓ Frequency conversion technology control to save energy
- ✓ Multiple alarm protection functions
- ✓ Modular form for easy disassembly



high power compressor



- ✓ Support multiple language systems
- ✓ Automatic detection and alarm protection
- ✓ Parameter preset, rental function





## Instrument parameters

Laser Type	Tri-waves or Quad waves
Wavelength	808/1064/755nm
Fluence	1-100J/cm <sup>2</sup> (adjustable)
Application Head	Sapphire crystal
Pulse Duration	1-400ms (adjustable)
Repetition Rate	1-10 Hz
Cooling System	compressor cooling + water cooling+ semiconductor cooling
Interface	15"
Laser Power	1800W
Output power	3500W
Spot Size	14.4x32mm
Handle temperature	-10°C - +20°C
Power Supply	AC90V~240V (Adjustable)



# Thanks!

[CONTACT US](#)